



**A Contemporary Resort & Spa  
in the Center of Attica Riviera**



**At a Glance**

experience world class  
**hospitality and relaxation**  
in a stunning landscape





## OVERVIEW

EverEden, the only true 4 star resort and spa in the Athenian Riviera, is an ideal destination facilitating easy access to sightseeing and attractions along with possibilities for short excursions to Saronic Gulf islands.

A tranquil, serene, resort with breathtaking vistas, laid back character, facilities and excellent cuisine. EverEden Beach Resort & Spa features all aspects of a modern resort, offering visitors the opportunity to access a multitude of historical places, experience nightlife, shopping, or simply explore the unmatched beauty of the coastline.

## LOCATION

EverEden Beach Resort comprises of 260 modern rooms, appointed in three buildings. Set amphitheatrically on a hillside, within the heart of a pine tree forest, the large estate of 45,000 sqm offers direct access to the secluded beach of Mavro Lithari.

The resort is located on the 47km of the Athens - Sounion coastal road just one hour away from Athens city center.



## ROOM COLLECTION: DELUXE STANDARD

Location: EverAlfa, EverBeta, EverGamma  
Facilities: satellite TV, mini bar, central a/c-heating, electric shaver outlets 220 volts, large balcony, Wi-Fi, safe, coffee and tea facilities  
Size: 27 sqm  
Units: 140  
View: sea view, garden view  
Max occup.: 2  
Min adults: 1  
Max adults: 2  
Max children: 1  
Bedding: twin / queen



## ROOM COLLECTION: DELUXE SUPERIOR

Location: EverAlfa, EverBeta, EverGamma  
Facilities: satellite TV, mini bar, central a/c-heating, electric shaver outlets 220 volts, large balcony, Wi-Fi, safe, coffee and tea facilities  
Size: 35 sqm  
Units: 71  
View: sea view, garden view  
Max occup.: 3  
Min adults: 1  
Max adults: 2  
Max children: 2  
Bedding: twin / queen



## ROOM COLLECTION: FAMILY SUITE

Location: EverGamma  
Facilities: satellite TV, mini bar, central a/c-heating, direct dial telephone, electric shaver outlets 220 volts, large balcony, Wi-Fi, safe, coffee and tea facilities, living area, main bedroom  
Size: 45 sqm  
Units: 30  
View: panoramic view  
Max occup.: 4  
Min adults: 1  
Max adults: 4  
Max children: 3  
Bedding: queen + 2 twin





## ROOM COLLECTION: BELVEDERE SUITE

Location: EverAlfa, EverBeta, EverGamma  
Facilities: satellite TV, mini bar, central a/c-heating, electric shaver outlets 220 volts, large balcony, Wi-Fi, safe, separate shower cabin, living area  
Size: 35 sqm  
Units: 10  
View: sea view  
Max occup.: 3  
Min adults: 1  
Max adults: 2  
Max children: 1  
Bedding: queen + 1 twin



## ROOM COLLECTION: FAMILY SUITE WITH PRIVATE POOL

Location: EverGamma  
Facilities: satellite TV, mini bar, central a/c-heating, direct dial telephone, electric shaver outlets 220 volts, large balcony, Wi-Fi, safe, coffee and tea facilities, living area, main bedroom.  
Size: 45 sqm  
Units: 5  
View: panoramic view  
Max occup.: 4  
Min adults: 1  
Max adults: 4  
Max children: 3  
Bedding: queen (separate)  
+ 2 twin





## ROOM COLLECTION: FAMILY SUITE WITH JACUZZI

Location: EverGamma  
Facilities: satellite TV, mini bar, central a/c-heating, direct dial telephone, electric shaver outlets 220 volts, large balcony, Wi-Fi, safe, coffee and tea facilities, living area, main bedroom.

Size: 45 sqm

Units: 5

View: panoramic view

Max occup.: 4

Min adults: 1

Max adults: 4

Max children: 3

Bedding: queen (separate)  
+ 2 twin



## ROOM COLLECTION: THE RESIDENCE SUITE

Location:	EverGamma
Facilities:	satellite TV, mini bar, central a/c-heating, direct dial telephone, electric shaver outlets 220 volts, large balcony, Wi-Fi, safe, coffee and tea facilities, espresso machine, living room, one master and two bedrooms
Size:	90 sqm
Units:	4
View:	panoramic sea view
Max occup.:	6
Min adults:	1
Max adults:	6
Max children:	5
Bedding:	queen x 2 + twin x 2







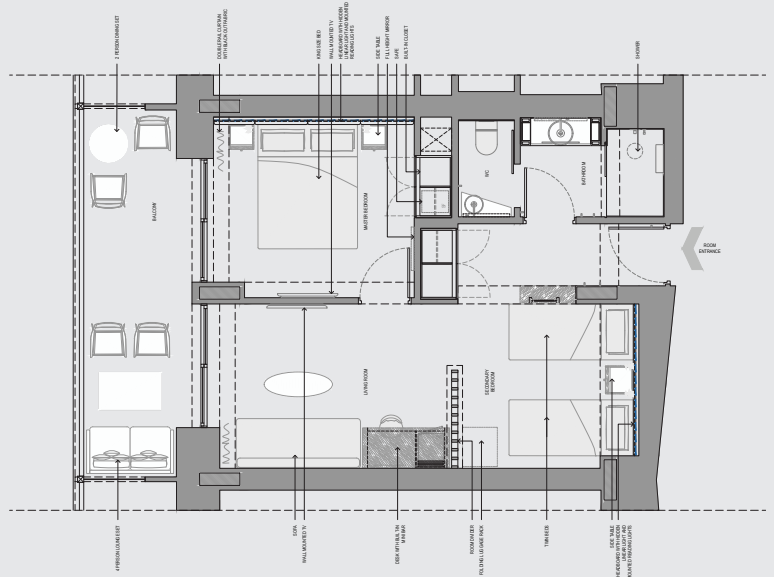
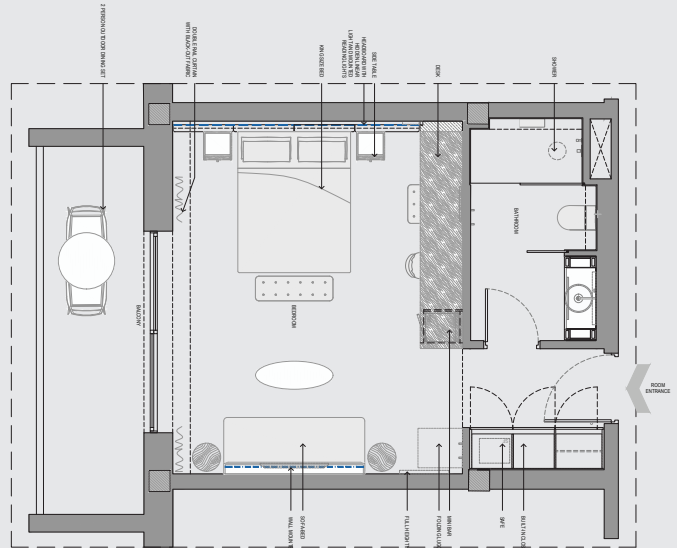
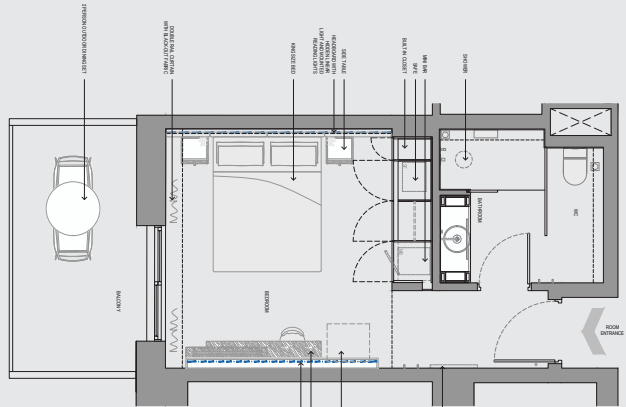


## DELUXE STANDARD

## DELUXE SUPERIOR

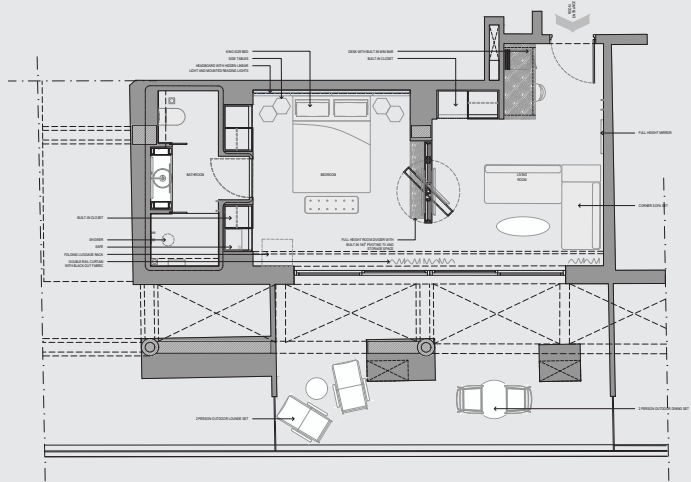
## FAMILY SUITE

# ARCHITECTURAL FLOOR PLANS

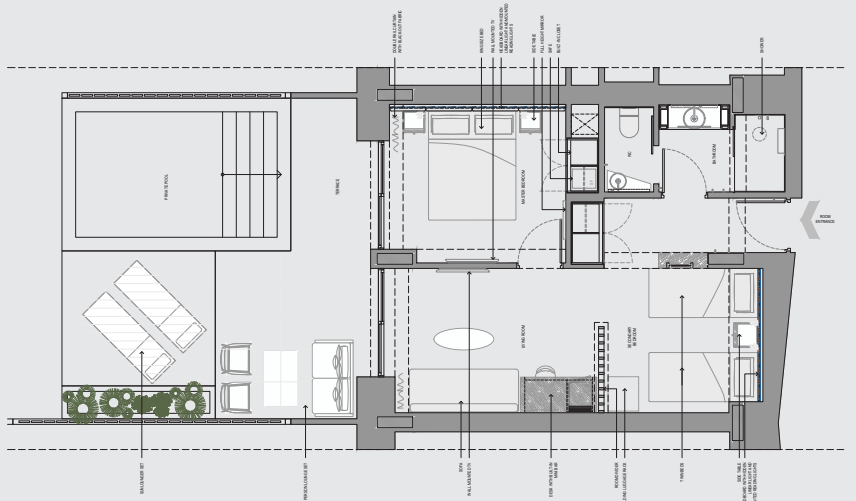


# ARCHITECTURAL FLOOR PLANS

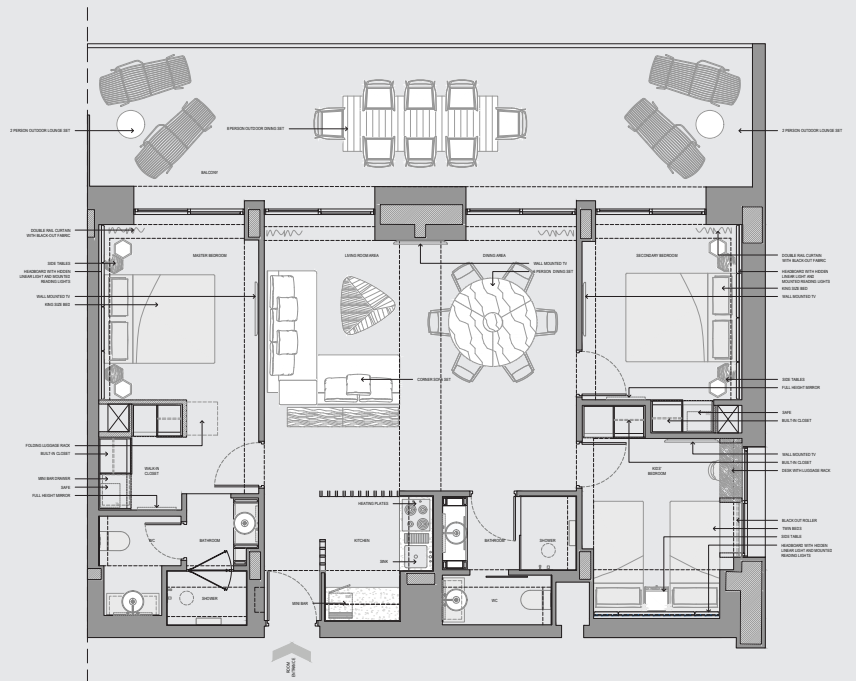
## BELVEDERE SUITE



## FAMILY SUITE pool / jacuzzi



## RESIDENCE SUITE





## DINING & DRINKING EXPERIENCE

Rich mediterranean cuisine served in an idyllic setting with unsurpassable views to the Saronic Gulf.

At Seasons Restaurant, you will taste the freshness and genuine flavors of the Mediterranean, along with supreme cooking demonstrations.

Breathtaking sunset from the grand veranda will indulge your senses.



indulge your senses





<b>SEASONS RESTAURANT</b>	Seating capacity: 260 persons indoor, 140 persons outdoor Meals: Breakfast Lunch Dinner (half board) Operating hours: 07:00 - 10:30 13:00 - 14:30 19:30 - 22:00 Cuisine: International - Theme Nights Type: Grand Buffet
<b>BEACH RESTAURANT</b>	Seating capacity: 55 persons Meals: Lunch & Dinner Operating hours: 13:00 - 23:00 Cuisine: Greek Type: A la Carte
<b>IL CENTRO POOL SNACK</b>	Seating capacity: 50 persons Operating hours: 11:00 - 19:00 Type: Snack
<b>BEACH SNACK</b>	Operating hours: 10:00 - 01:00 Type: Snack
<b>BEACH COCKTAIL BAR</b>	Operating hours: 13:00 - 00:00 Type: Cocktails & Spirits
<b>IL CENTRO POOL BAR</b>	Operating hours: 11:00 - 20:00 Type: Cocktails & Spirits
<b>EVERHEIGHTS POOL BAR</b>	Operating hours: 11:00 - 20:00 Type: Cocktails & Spirits
<b>GROVE BAR lobby / veranda</b>	Operating hours: 09:00 - 12:00 Type: Cocktails & Spirits











## MEETINGS & CONFERENCES

Our Conference Center, with state-of-the-art audiovisual equipment, is ideal for your business events.

Its flexible set up will give you solutions for any number of participants.

### MOSAIC (plenary)

	with corridor		corridor incorporated	
	Theatre	School	Theatre	School
Seats	150	117	428	327
Speaker seats	5	5	5	5
Podium	yes	yes	yes	yes

### THEATRE LAYOUT

	Aries II	Aries I	Zaius II	Zaius I	Artemis II	Artemis I
Seats	30	30	30	30	30	35
Speaker seats	2	2	2	2	2	2
Podium	1	1	1	1	1	1

### U SHAPE

Room	Aries II	Aries I	Zaius II	Zaius I	Artemis II	Artemis I
Seats	15	20	20	20	20	15
Speaker seats						
Podium						

### CLASSROOM LAYOUT

Room	Aries II	Aries I	Zaius II	Zaius I	Artemis II	Artemis I
Seats	20	18	24	24	24	22
Speaker seats	1	1	1	1	1	1
Podium	1	1	1	1	1	1

### Room Dimensions

Aries II:	5.90 x 5.60 x 2.45 m	Zaius II:	5.70 x 6.80 x 2.45 m	Artemis II:	6.70 x 6.00 x 2.45 m
Aries I:	7.10 x 4.90 x 2.45 m	Zaius I:	6.70 x 6.30 x 2.45 m	Artemis I:	6.70 x 6.00 x 2.45 m







## THE BEACH

The EverEden beach has been awarded with the “blue flag” for nineteen consecutive years - an award reflecting the cleanliness of the sea water, services and facilities of the beach.

Our famous beach club features:

- \* Cocktail bar
- \* Snack and beach restaurant
- \* Changing cabins, showers and lockers
- \* Sun beds and parasols
- \* Lifeguard and first aid
- \* Professional water sports
- \* Scuba diving shop
- \* Aqua park





## THE POOLS

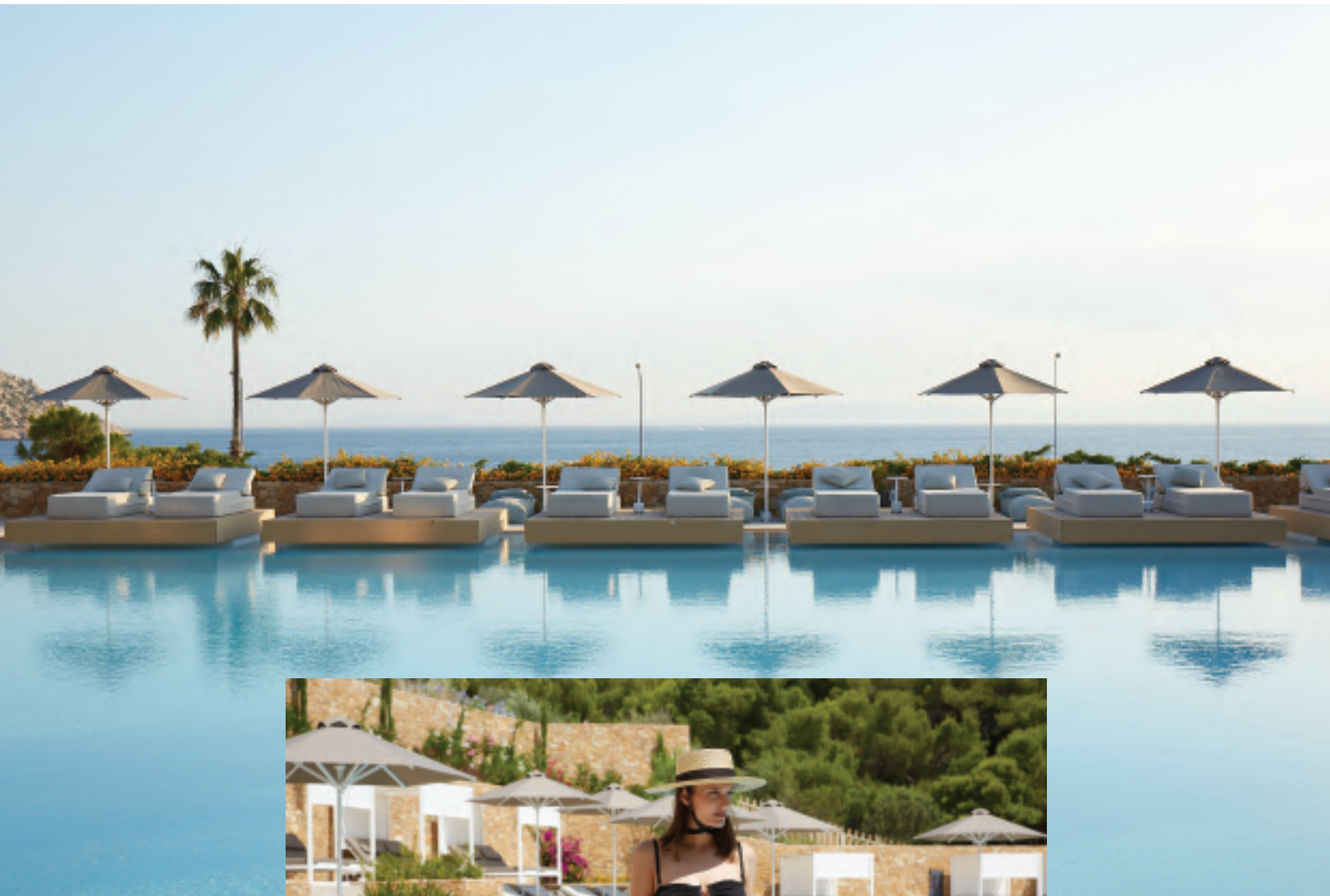
Il Centro pool is exactly in the middle of the resort. Overlooking the sea in the direction of the sunset, the Il Centro swimming pool impresses with all its amenities; floating deck, cabanas, water level seating area and snack bar.

The EverHeights pool is located at the highest point of the hotel. In the heart of the pine forest, offers panoramic views of the bay. A place of tranquility and relaxation.

The EverHeights Snack bar is at your disposal.

On the ground floor of the EverBeta building the hotel's indoor pool is located.

The size makes it ideal for relaxation and well-being. Hammam and sauna can also be enjoyed in the same area.



life feels good  
by the pool

---







## WELLNESS

### ■ THE SPA CENTER

Step into our world of wellness. Expert staff will provide you an extraordinary level of personalized service to beautify, enhance and restore. Indulgent signature treatments and techniques to invigorate and inspire. With surroundings of unrivalled quality designed to refresh and relax both body and soul, your time with us will be truly unforgettable.







## ■ THE GYM

Whether you want to keep up with your regular fitness regimen or unwind with some exercise after a busy day, the EverEden Beach Resort guests fitness center is at your disposal. The fitness center is fully stocked with all machines, treadmills, free weights and benches, so that a complete workout program can be executed comfortably.

Feeling like getting out of the gym? Enjoy running or hiking in our hiking path or choose one of the remote spots to perform your yoga routine!



## SHOPPING

### ■ THE BOUTIQUE

Indulge into a little shopping in one of our two boutiques, which offer an enchanting collection of locally hand-crafted gifts, jewelry and clothing.

## RECREATION & LEISURE

### ■ INSIDE THE RESORT

- \* Professional water ski & wakeboarding school (additional charge)
- \* Jet ski (additional charge)
- \* Pedaloos & canoes (additional charge)
- \* Aqua park (additional charge)
- \* PADI scuba diving centre (additional charge)
- \* Two large outdoor swimming pools
- \* Hiking - running tracks
- \* Spa center (additional charge)
- \* Fully equipped indoor gym
- \* Indoor pool
- \* Outdoor theatre
- \* Shops

### ■ OUTSIDE THE RESORT

- \* Day cruises (one day - three islands)
- \* Hiking
- \* Mountain bike
- \* Tennis
- \* Volley & beach volley
- \* Go carts
- \* Fishing excursion
- \* Five aside football
- \* Glyfada golf course
- \* Poseidon shrine
- \* Acropolis & museums
- \* Speed boats trips
- \* Vouliagmeni Thermal Lake











Clean the World™

## DISTANCES

20 km from the ancient Poseidon's Temple in Sounio  
25 km from the Athens International Airport  
47 km from Athens center  
30 km from Lavrion Harbor  
20 km from Attica Ring Road  
20 km from Vouliagmeni Thermal Lake

## ADDRESS & CONTACT

47km Athens - Sounion Avenue  
190 13 Anavyssos, Attica, Greece  
T +30 22910 60031  
F +30 22910 60043  
E [welcome@evereden.gr](mailto:welcome@evereden.gr)  
W [www.evereden.gr](http://www.evereden.gr)



wherever you go  
**go with all your heart**

